



## ATTENTION: PLEASE READ

Date: January 23, 2024

Bulletin #: Bul-Prod-0124-033

### Subject: **New Neapco Performance Aluminum Driveshaft Kits**

To: **All Neapco Drivelines Aftermarket Group Customers**

Neapco is pleased to announce our new Neapco Performance Series (NPS) Aluminum Driveshaft Kits.

These 12 part numbers span 1310, 1330, 1350, 1410, 1480 and 1550 driveline series.

**Neapco Performance Series (NPS) Aluminum Driveshaft Kits are designed, engineered, and manufactured with the highest-quality materials, to provide increased strength and performance that meet the demands for high HP/torque applications. Kits include two NPS aluminum weld yokes and tube, see table below for available driveline series and tubing size options.**

- 100% Made in the USA.
- Available in 1310, 1330, 1350, 1410, 1480 and 1550 driveline series.
- Available tubing diameters: 3.0, 3.5, 4.0 and 5.0 inch (*driveline series not available in all tubing sizes*).
- Driveline series, tube diameter and length combinations cover ALL the most common applications.
- 6061-T6 aluminum seamless DOM tubing
  - .125-inch wall thickness exceeds driveline series strength requirement.
  - Diameter and length established to ensure there will be no critical speed issues for **standard** applications.
- Performance aluminum weld yokes
  - Made from forged 6061-T6 aluminum.
  - Engineered for high HP/torque applications.
  - Increased pilot wall thickness and longer press length for a straighter more consistent weld.
  - Precision machined to reduce runout to improve balance.



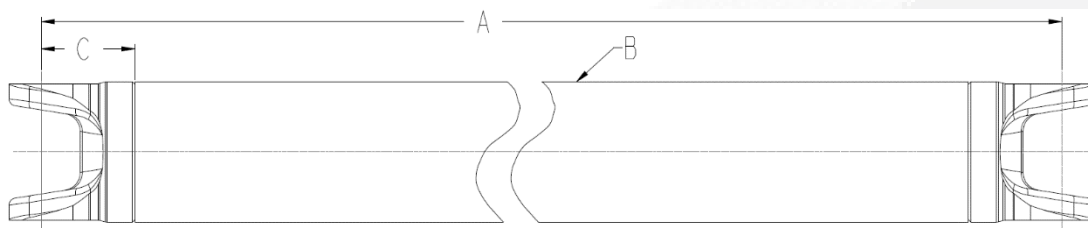
(continued)



Neapco - New England Auto Products Corporation U.S.A. since 1921.  
NeapcoAftermarket.com

E-catalog and customer order portal: [NeapcoParts.com](http://NeapcoParts.com)

**ATTENTION: PLEASE READ**



DL SERIES	DRIVESHAFT STYLE	TUBE SIZE	MAXIMUM LENGTH CL TO CL	CL TO POINT OF WELD	PART NUMBER
<b>1310 SERIES</b>					
1310	UNWELDED	3.00 X .125	58.80	2.40	A131-5400-3HDP
1310	UNWELDED	3.50 X .125	58.80	2.40	A131-5400-3.5HDP
<b>1330 SERIES</b>					
1330	UNWELDED	3.00 X .125	59.35	2.68	A133-5400-3HDP
1330	UNWELDED	3.50 X .125	59.35	2.68	A133-5400-3.5HDP
1330	UNWELDED	4.00 X .125	77.35	2.68	A133-7200-4HDP
<b>1350 SERIES</b>					
1350	UNWELDED	3.00 X .125	59.35	2.68	A135-5400-3HDP
1350	UNWELDED	3.50 X .125	59.35	2.68	A135-5400-3.5HDP
1350	UNWELDED	4.00 X .125	77.35	2.68	A135-7200-4HDP
<b>1410 SERIES</b>					
1410	UNWELDED	4.00 X .125	77.98	2.99	A141-7200-4HDP
1410	UNWELDED	5.00 X .125	85.98	2.99	A141-8000-5HDP
<b>1480 SERIES</b>					
1480	UNWELDED	5.00 X .125	85.98	2.99	A148-8000-5HDP
<b>1550 SERIES</b>					
1550	UNWELDED	5.00 X .125	86.45	3.23	A155-8000-5HDP

To learn more about Neapco brand products please visit [www.NeapcoAftermarket.com](http://www.NeapcoAftermarket.com). Please contact your respective Neapco sales representative with any additional questions you might have regarding this outstanding new product offering.



Danielle Forton  
Product Data Analyst/Tech Support Supervisor

